



# YURI

## About us

yuri is a space biotech company that makes life science research in microgravity easier and more affordable. With experience from 20 ISS payloads for NASA, ESA, DLR and the likes, the team of 30+ space engineers and biologists supports researchers around the world. Besides launching experiments to the ISS, yuri develops Random Positioning Machines (RPM, formerly Airbus) and Clinostats for purchase and rental. They also started developing their own line of biotech products formed in microgravity.

yuri GmbH | yuri USA Inc. | yuri LUX GmbH  
Wiesentalstr. 40 | 88074 | Meckenbeuren  
Germany | [hello@yurigravity.com](mailto:hello@yurigravity.com)  
[www.yurigravity.com](http://www.yurigravity.com)

## When

Our maiden launch is scheduled for early 2024 on a visiting spacecraft to the ISS!



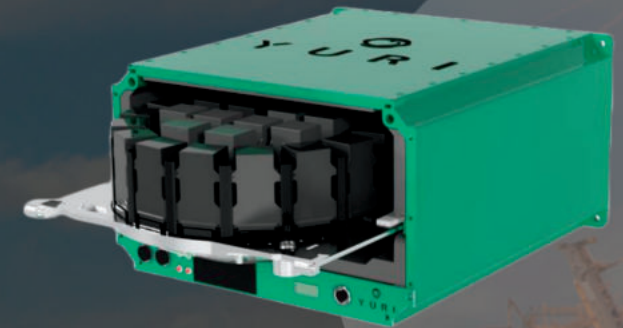
## How

Scan the QR code to secure one of the limited spots on this historic mission and get more information.



# YURI SCIENCETAXI

| Your Space Incubator



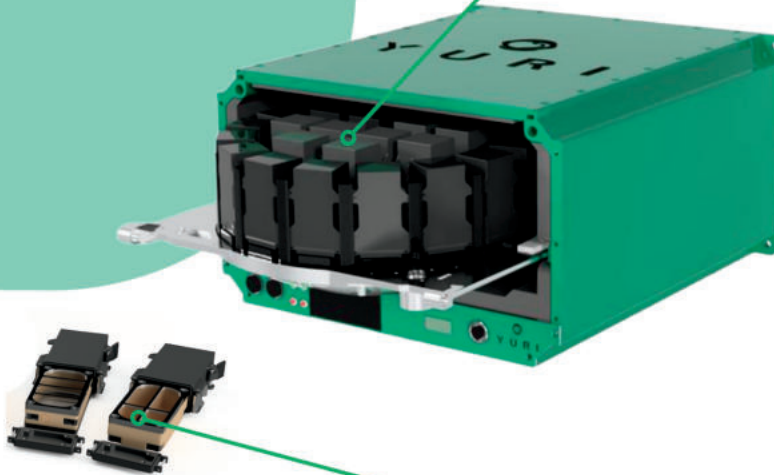
Launching  
in 2024



## Details

- ✓ Choose between different types of ScienceShells (e.g., plants, cells, crystal)
- ✓ Run experiments fully automated and control them from Earth
- ✓ Run experiments on micro, Moon, Mars and Earth gravity with the integrated centrifuge
- ✓ Collect data in real-time (e.g., microscope images)

Adjust temperature from +4°C to +40°C (39°F to 104°F)



Choose from 38 ScienceShells that are launched per mission

YURI

Scan to get on the waiting list

