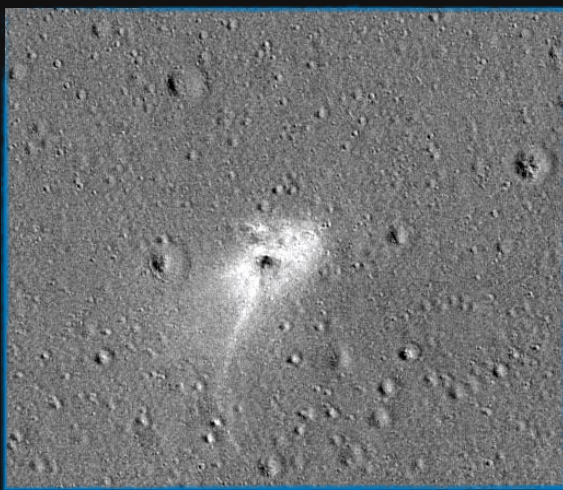
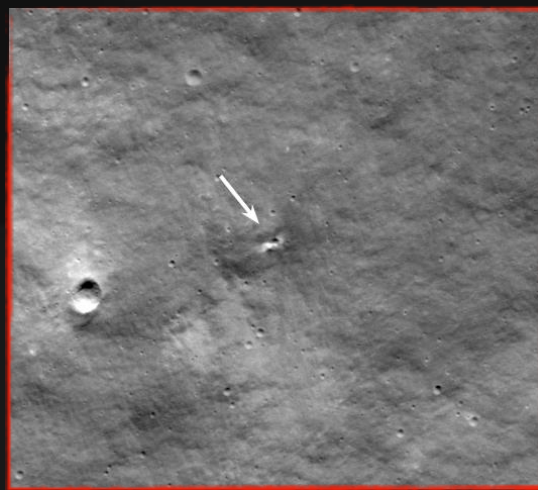


# Sustain lunar exploration through worldwide public support



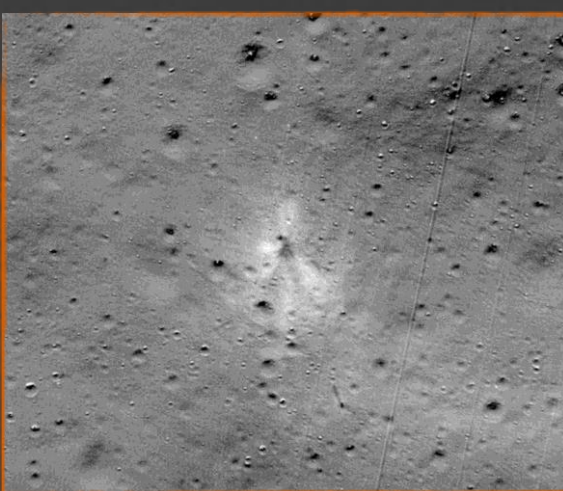
*Beresheet crash*



*Luna 25 crash*



*Hakuto-R crash*



*Chandrayaan 2 crash*

- The lunar return involves unique conditions
  - But Moon missions remain risky
- National space agencies remain anchor customers
  - Commercial players are now on the critical path
- There is no alternative to public buy-in and funding
  - Yet, people are largely unaware

*Need to reach more people at large, and effectively so.*



- JATAN MEHTA ([blog.jatan.space](http://blog.jatan.space))

Space for Inspiration 2024, ESA ESTEC