

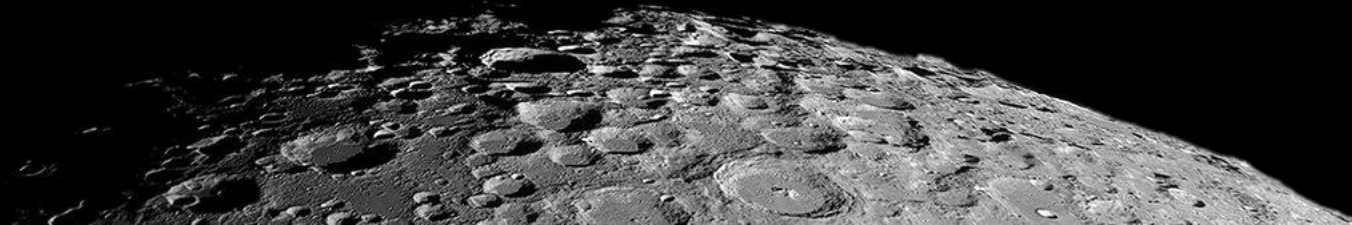
spaceport
rostock



#TheMoon

Welcome to #TheMoon

Europe`s first fully privately financed
lunar test facility

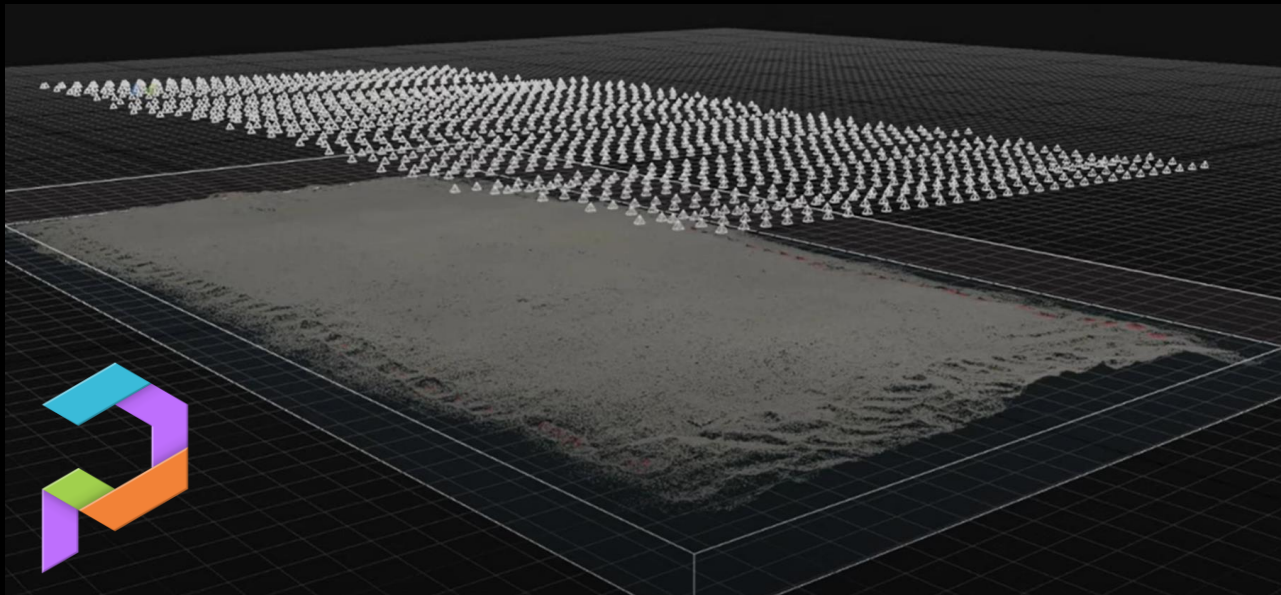


#TheMoon - Impressions

Regolith-Testbed

- 40.000 kg of scientific lunar simulant
- 17m x 5m x 40cm experimental area
- Possibility to simulate lunar lighting conditions (darkening & high intense spot light)
- Mobile gantry for gravity assist
- Fast booking of testing slots





Source: Poly Haven, https://www.youtube.com/watch?v=Xult40n_eY8



Rover by Neurospace GmbH



Challenges with Lunar Regolith

- “...the dust could present a hazard to crew health , and at least it constitutes a nuisance .” (Apollo 12 Mission report)
- ~62 mentions of lunar dust with negative connotation in Apollo 12 mission report
- Total EVA duration of 7h 45min



Source: IEEE Spectrum,
<https://spectrum.ieee.org/moondust-radiation-and-low-gravity-the-health-risks-of-living-on-the-moon>





spaceport rostock

#TheMoon



Book your slot at <https://testingfor.space>

Lasse Hansen

Development Engineer/ PhD Student
lasse.hansen@pts.space

Frank Koch

Chief Moon Operator
frank.koch@pts.space

