

ETOILE

June 2025



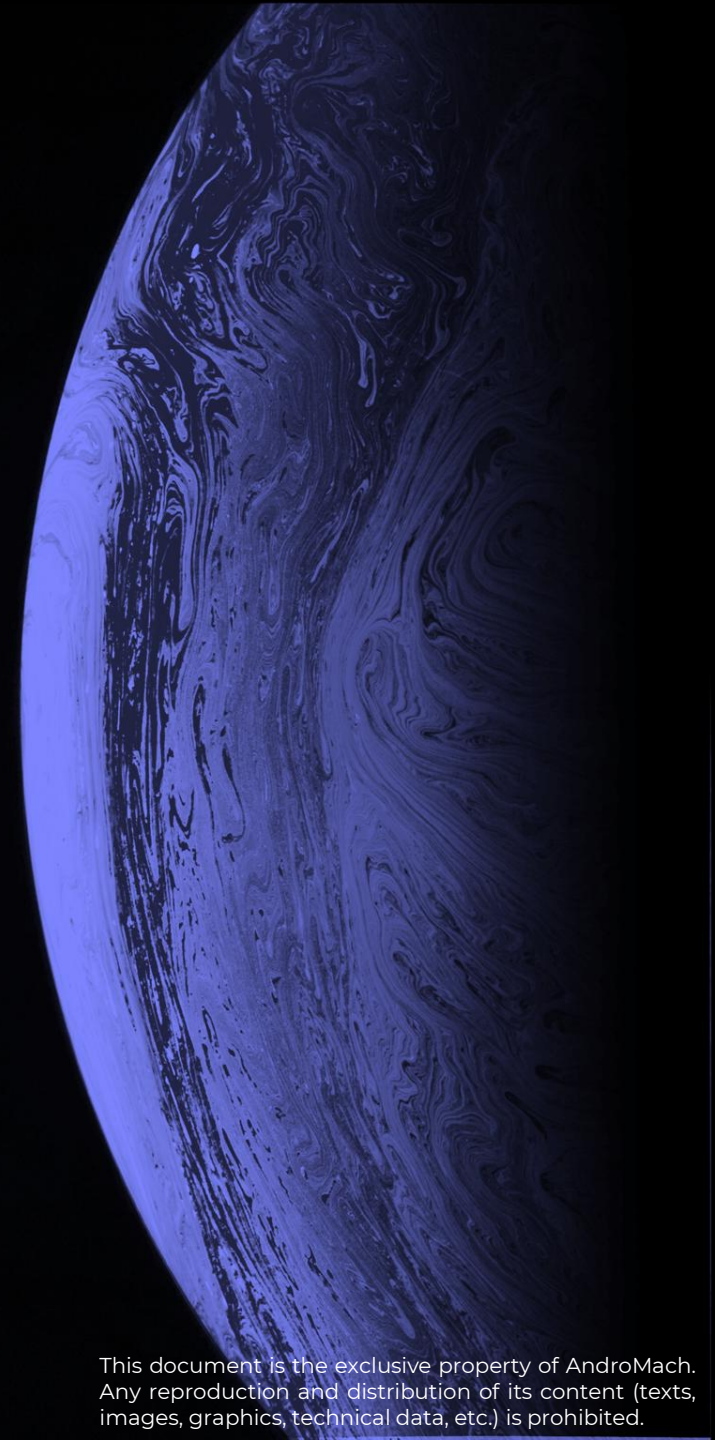
AndroMach

We bring back
Innovations from space

Hugo Verjus – hugo.verjus@andromach.space
<https://www.andromach.space/>

© AndroMach 2025. All rights reserved.

This document is the exclusive property of AndroMach.
Any reproduction and distribution of its content (texts,
images, graphics, technical data, etc.) is prohibited.



ETOILE 2031

Orbital Spaceplane

Designed for long-duration missions in low-Earth orbit, the ETOILE spaceplane can be launched by several compatible micro-launchers. The vehicle remains in orbit for between a few hours and 2 months, before de-orbiting, re-entering the atmosphere and gently returning its payload to a landing strip. A version designed for extended mission duration and maximizing available delta-V is planned.

Specifications*

Payload mass : 100 kg

Internal volume : 200 L

Power supply : to be defined

Telemetry : rate to be defined

Pressurisation : yes

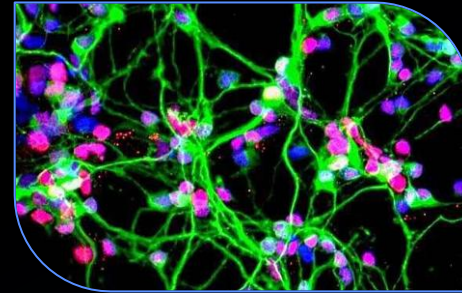
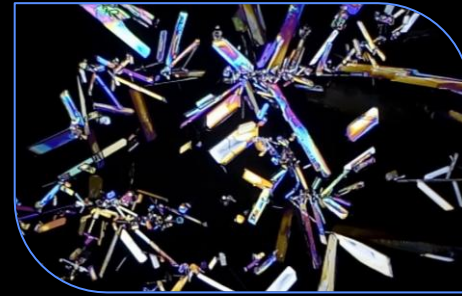
Temperature control : yes

Exposure to space environment : yes

Duration : up to 2 months

Late access : 48h

* Since the development of ÉTOILE is still at an early stage, the specifications are likely to evolve in order to better align with the identified needs.



Pharma

Biotech

Semiconductors

Optics fiber

IOV/IOD

IOS

Reentry

Space defense

**Partner
Micro
Launcher**

ETOILE - 2031

CONOPS

